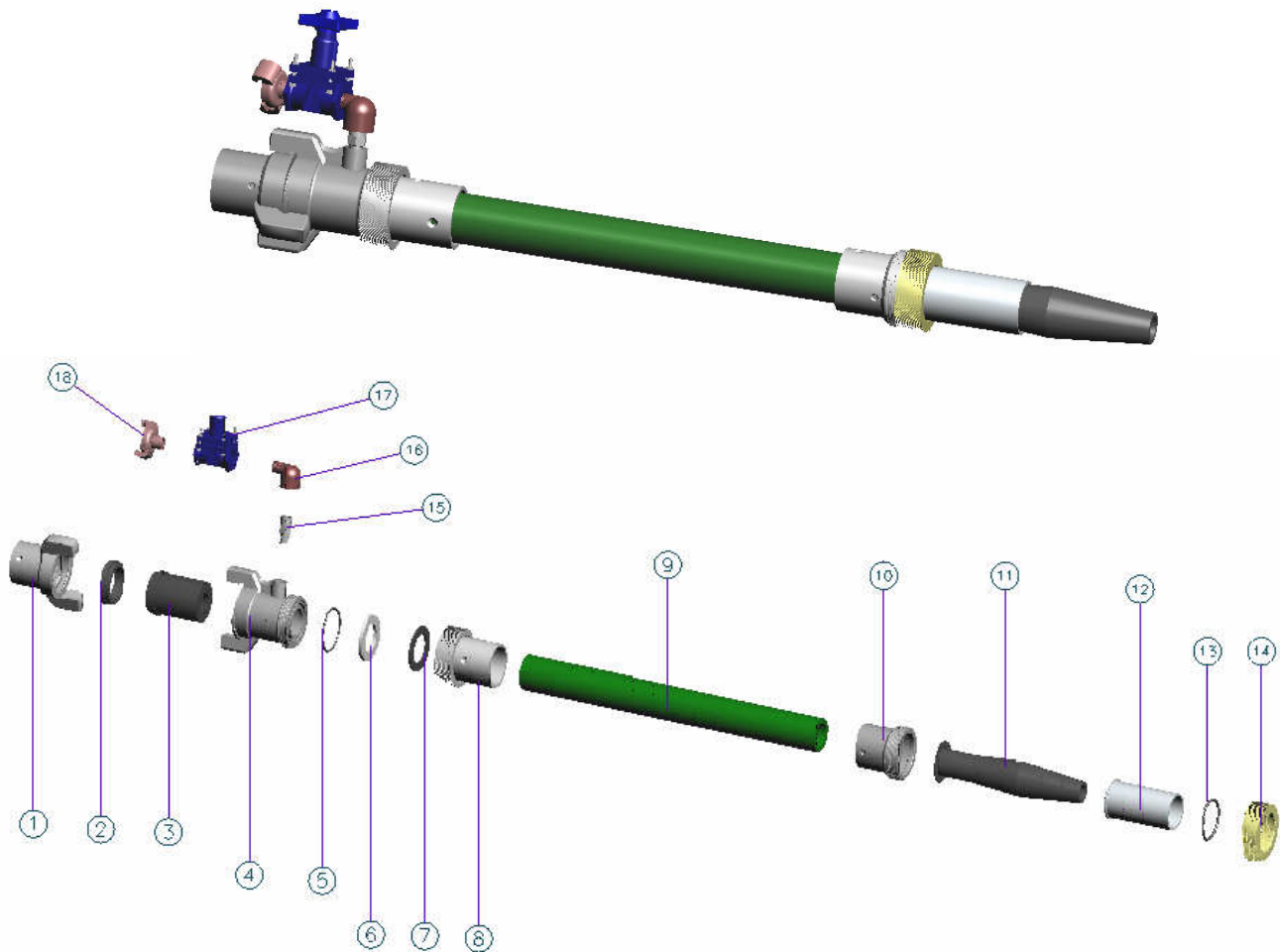


25-500A Boulder Nozzle Complete & 25-51A Extension Parts Reference and Prices



**Lawn Road Industrial Estate, Carlton in Lindrick,
Worksop, Notts, S81 9LB. England.**

TEL: +44 (0) 1909 730861 FAX: +44 (0) 1909 733584
www.markham-sheffield.co.uk

Parts List

ID	PART No	DESCRIPTION	QTY
1	25-45	QUICK RELEASE HOSE COUPLING COMPLETE (OPTIONAL EXTRA)	1
2	25-64	COUPLING SEAL WASHER (FOR 25-45)	1
3	25-508	BODY LINER	1
4	25-500	NOZZLE BODY	1
5	25-507	BODY LINER "O" RING	1
6	25-509	WATER PLATE (ALUMINIUM)	1
7	25-61B	ADAPTER SEAL WASHER (FOR 25-512)	1
8	25-512	NOZZLE EXTENSION ADAPTOR (TO BODY)	1
9	14-SMOO-38/56	38mm ID EXTENSION HOSE	0.5m
10	25-511	NOZZLE EXTENSION ADAPTOR (TO CAP)	1
11	25-701	TIP LINER	1
12	25-702	NOZZLE TIP LINER HOLDER	1
13	25-366	CAP "O" RING	1
14	25-307	BRONZE CAP	1
15	77-028	HEX WATER NIPPLE	1
16	77-078	½ " 90 DEG M/F ELBOW	1
17	25-53C	WATER VALVE	1
18	75-18	½ " QUICK RELEASE CLAW COUPLING	1
*	25-500A	BOULDER NOZZLE COMPLETE (WITHOUT EXTENSION)	1
*	25-51A	EXTENSION COMPLETE (ITEMS 7,8, 9 & 10)	1

**Lawn Road Industrial Estate, Carlton in Lindrick,
Worksop, Notts, S81 9LB. England.**

TEL: +44 (0) 1909 730861 FAX: +44 (0) 1909 733584
www.markham-sheffield.co.uk