



	Page
<b>Contents</b>	
<b>Complete Equipment with Scope of Supply</b>	2 - 3
<b>Accessories</b>	4 - 5
<b>Spare Parts</b>	
P15 230V / 400V	6 - 7
Electric Control System 230V 1ph incl. FU, compl.	9
Control Panel (Supply Voltage 230V 1ph or 400V 3ph)	10 - 11
P15 400V	12 - 13
Electric Control System 400V 3ph incl. FU, compl.	15
Control Panel (Supply Voltage 400V 3ph)	16 - 17
Air Fitting P15	18
Bag Mangle	19

**For further accessories as well as the spare parts of the accessories please refer to catalogue "Accessories"**



## Complete Equipment with Scope of Supply

**548900 P15 230/400V 50Hz 1/3ph  
with removable material trough V2A  
4kW  
Capacity: approx. 0.3-16 l/min.**

### **Scope of Supply:**

Pump on mobile frame,  
with control panel and frequency converter 4kW, 230V 1ph

548907 Material trough V2A  
548912 Stator m-tec star with anti-twist protection, blue  
548911 Rotor m-tec-star with borehole  
548921 Pump end piece compl. with F35 coupling  
incl. hose pressure manometer

606286 Reduction piece M35/M25 rotating part  
605105 Reduction piece F35 / GEKA coupling  
603045 Connecting cable 3x2.5 25m 230V 16A 3pole 6h  
shock-proof plug)

**548900/001 P15 230/400V 50Hz 1/3ph  
with removable extruder and filling trough V2A  
4kW 230V 1ph / 400V 3ph  
Capacity: approx. 0.3-16 l/min.**

### **Scope of Supply:**

Pump on mobile frame,  
with control panel and frequency converter 4kW, 230V 1ph

548940 V2A extruder with C-coupling  
549458 Filling hopper V2A for the Extruder  
548912 Stator m-tec star with anti-twist protection, blue  
548911 Rotor m-tec-star with borehole  
548921 Pump end piece compl. with F35 coupling  
incl. hose pressure manometer

606286 Reduction piece M35/M25 rotating part  
605105 Reduction piece F35 / GEKA coupling  
603045 Connecting cable 3x2.5 25m 230V 16A 3pole 6h  
shock-proof plug)



## Complete Equipment with Scope of Supply

**548980 P15 400V 50Hz 3ph**  
**with removable material trough V2A,**  
**4kW**  
**Capacity: approx. 0.3-16 l/min.**

### **Scope of Supply:**

Pump on mobile frame,  
with control panel and frequency converter 4kW, 400V 3ph

548907 Material trough V2A  
548912 Stator m-tec star with anti-twist protection, blue  
548911 Rotor m-tec-star with borehole  
548921 Pump end piece compl. with F35 coupling  
incl. hose pressure manometer  
606286 Reduction piece M35/M25 rotating part  
605105 Reduction piece F35 / GEKA coupling

**548980/001 P15 400V 50Hz 3ph**  
**with removable Extruder and filling trough V2A**  
**4kW 400V 3ph**  
**Capacity: approx. 0.3-16 l/min.**

### **Scope of Supply:**

Pump on mobile frame,  
with control panel and frequency converter 4kW, 400V 3ph

548940 V2A extruder with C-coupling  
549458 Filling hopper V2A for the Extruder  
548912 Stator m-tec star with anti-twist protection, blue  
548911 Rotor m-tec-star with borehole  
548921 Pump end piece compl. with F35 coupling  
incl. hose pressure manometer  
606286 Reduction piece M35/M25 rotating part  
605105 Reduction piece F35 / GEKA coupling



# Accessories

Item     Ordering No. Description

## Accessories Recommended for Pumping

606286*	Reduction fitting M35/M25
605105*	Reduction fitting, cleaning, F35/GEKA
605066	Mortar hose DN25 M25/F25, 10m compl.
545049	Mortar hose * DN35 M35/F35, 13.3m compl.
600285	Sponge rubber ball ø 35mm, packing unit 10 pieces
600286	Sponge rubber ball ø 45mm, packing unit 10 pieces
548912*	Stator m-tec star with anti-twist protection, blue
548911*	Rotor m-tec-star with borehole
600193	Remote control RC 2000 230V
549215	Remote control cable including rocker switch compl. 25m
549235	Remote control cable including rocker switch compl. 50m
545330	Remote control cable 50m on a cable drum

## Accessories Recommended for Spraying

606286*	Reduction piece M35/M25 rotating part
605105*	Reduction piece F35/GEKA coupling
605066	Mortar hose DN25 M25 / F25, 10m compl.
545049	Mortar hose * DN35 M35/F35, 13.3m compl.
600285	Sponge rubber ball ø 35mm, packing unit 10 pieces
600286	Sponge rubber ball ø 45mm, packing unit 10 pieces
548912*	Stator m-tec star with anti-twist protection, blue
548911*	Rotor m-tec-star with borehole
603041	Stator m-tec mono-star, re-adjustable, yellow/green
603043	Rotor mono-star with borehole
620318	Stator D4 - 60 pitch, re-adjustable, white
620354	Rotor D4 - 1/1 with borehole
620345	Stator D8 - 1.5, re-adjustable, green
620324	Rotor D8 -1.5 with borehole
620334	Stator D4 - 1/2, re-adjustable, gray
620330/001	Rotor D4-1/1 with borehole

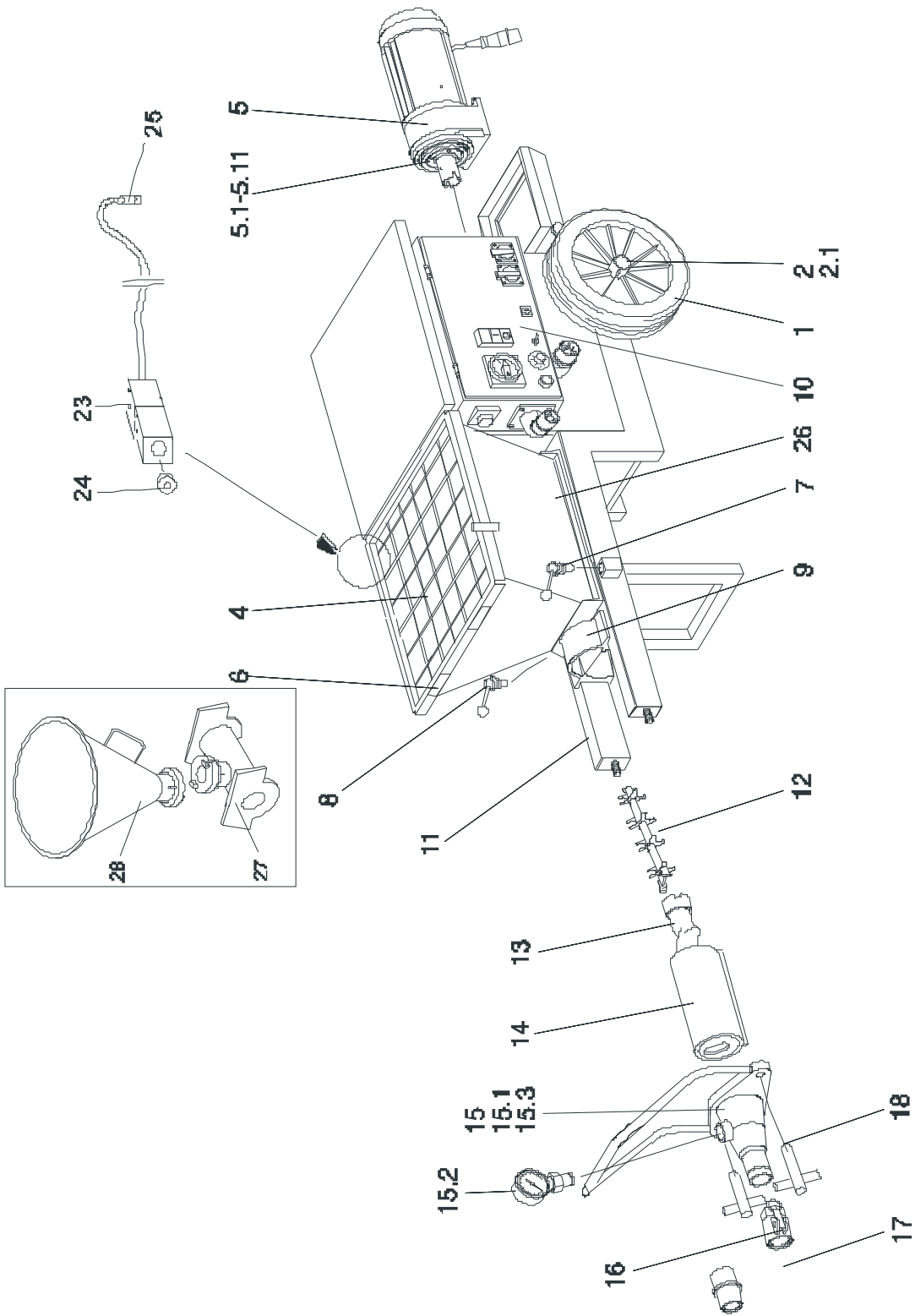
\* : Scope of supply



# Accessories

Item	Ordering No.	Description
	605145	Spraying device F25 straight, 200mm long <b>Control via air fitting</b>
	606405	One hand glue gun green, compl. with hose DN19 - 2m long F25
	606486	Glue gun compl. with swivel coupling, glue hose
	606495	Spraying device head compl. for glue gun Type II
	606496	Spraying head compl. for glue gun Type II
	549210/001	Spraying device -"INTEGRA" compl. straight F25 with magnetic switch
	549205/001	Spraying device -"INTEGRA" compl. cropped F25 with magnet switch (from 01/2002)
	549420/001	Spraying device -"INTEGRA" Combination compl., F25, from 01/2002 incl. sprayer head and glue connection hose, magnetic switch control system using remote control cable 4-pole
	601183	Extension cable 4-pole, compl. 10m
	601187	Remote control - Extension cable 4-pole compl.
	549035	R-Meko 600/W 230V/50Hz 1ph
	549030	R-Meko 720/D 400V/50Hz
	549015	Compressor V-Meko 400/D , 400V
	549010	Compressor V-Meko 400V
	603065	V-Meko 250W compressor 230V 50Hz 1ph
	548898	Air fitting compl. (for P15)
	602322	Air hose 1/2", 11m compl. with GEKA
	<b>Optional Accessories</b>	
	606466	Y - piece V35 / 2x V25 for two glue guns
	606467	Y - piece electrical connection 4-pole for two glue
	548950	Attachment hopper, V2A (V = 70 Litres)
	548907**	Material trough V2A
	548940**	V2A extruder with C-coupling
	549141	Suction hose DN50, C + B coupling, 1.0m long
	548945	Suction hose DN50, C-coupling on both sides, 0.7m
	548962	Suction hose DN75, B-coupling on both sides, 1.0m long
	501415	Adapter coupling from B to C with pressure / suction seal
	549458**	Filling hopper V2A for the Extruder
	549040	Bag mangle for pasty goods materials compl.
	548930	Sensor type NMS, one-way sensor including the sensor bracket <b>Spare parts see chap. "Sensors"</b>
	601351/001	Auxiliary water pump 230V
	602307	Water hose 3/4", 20m compl. with GEKA
	601185	Suction hose 3/4", 4m compl.
	606165	Connecting cable 5x4 <sup>2</sup> 50m long
	603045**	Connecting cable 3x2.5, 25m 230V (16A 3pole 6h / safety socket)
	548338	Connecting cable mixer to the pump, 16A 5pole 6h, 2.5m

\*\* : P15 scope of supplies, depending upon design





# Spare Parts

## P15 4,0kW 230V 1ph / 400V 3ph

Item	Ordering No.	Description
0	548900	<b>P15 230/400V 50Hz 1/3ph, with material trough</b>
0	548900/001	<b>P15 230/400V 50Hz 1/3ph, with extruder</b>
1	549152	Solid rubber wheel ø 260
2	580107	Folding pin ø 4.5mm galvanized
2.1	561249	Washer DIN125-B 21
4	548909	Protective screen (V2A)
5	548916	Drive unit 4kW compl. 230/400V, 50/60Hz
5.1	548931	Spur gear motor 4kW 140 Revs/min
5.2	560133	Fan cover 4kW 260U
5.3	560008	Fan blade for the drive motor
5.4	548917	Flange for the drive
5.5	540035	Call grease nipple B M6x1 (45 degrees)
5.6	548946	Motor coupling 30mm (Steel)
5.7	561299	Grub screw M6x10
5.8	548920	Rubber seal D 100
5.9	548919	Pressure flange (steel)
5.10	548963	Seal 132/120 - 6 (from 10/2002)
5.10	548941	O-Ring 120x6 (until 10/2002)
6	605325	Counter hook for the hood support galvanized
7	548937	Left clamping grip compl.
7.1	548906	Headless screw GN220-M10
7.2	548914	Left door lock
8	548905	Right clamping grip compl.
8.1	548906	Headless screw GN220-M10
8.2	548915	Right door lock
9	548938	Anti-rotating equipment
10	548498	Electric control compl.
		<b>Spare parts see next page</b>
11	548903	Brass slat
12	548913	Conveyor screw 50 pitch
13	548911	Rotor m-tec-star with borehole
14	548912	Stator m-tec star with anti-twist protection, blue
15	548921	Pump end piece compl. with F35 coupling incl. hose pressure manometer
15.1	548932	Pump end piece DN35 (Steel)
15.2	548922	Manometer 0-100bar in a stainless steel enclosure including protective guard
16	605067	Mortar automatic hose coupling F35-1 1/4" internal thread, ID 33mm
17	606286	Reduction piece M35/M25 rotating part
18	548939	Bronzed toggle nut M16
23	549947	Safety switch
24	549948	Magnet
25	573017	Coupling plug 4-pole PG 13.5
26	548907	Material trough V2A
27	548940	V2A extruder with C-coupling
28	549458	Filling hopper V2A for the Extruder





# Spare Parts

## Electric Control System P15 230V 1ph incl. FU

Item	Ordering No.	Description
0	548498	Electric Control System 230V 1ph incl. FU, compl.
1	548330	Panel compl. for control
2	548925	Cover
3	548325	Cover for the frequency converter enclosure
4	548924	Control panel compl.
<b>Spare parts see next page</b>		
5	548159/004	Frequency converter 3,7kW Code 30.12 progr.
6	549497	Cable for frequency converter compl.
6.1	602253	PVC screw connection M20x1.5
6.2	549273	Nozzle housing
6.3	549268	Plug insert
8	608062	Filter fan - Sealed frame Type D200 (from 01/2004)
9	608063	Outlet filter Type GV200 (from 01/2004)
10	530060	Foam rubber seal 15 x 5 (per meter)



4 1 2 6 6.1 / 6.2 / 6.3



3 10 5 8 / 9

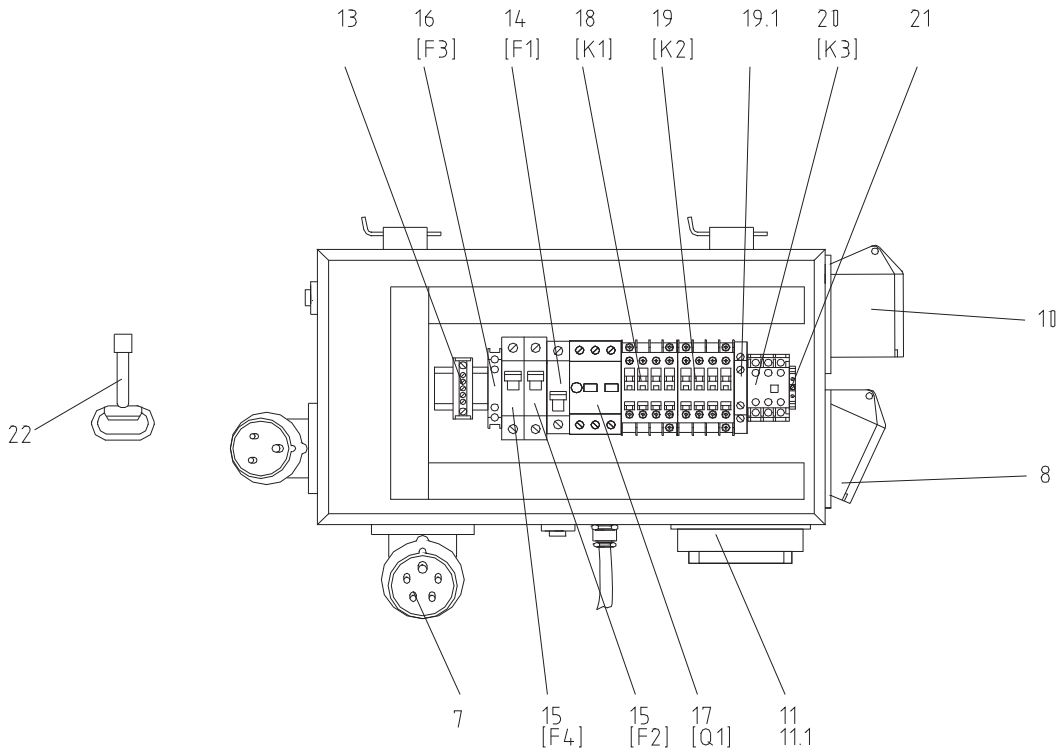
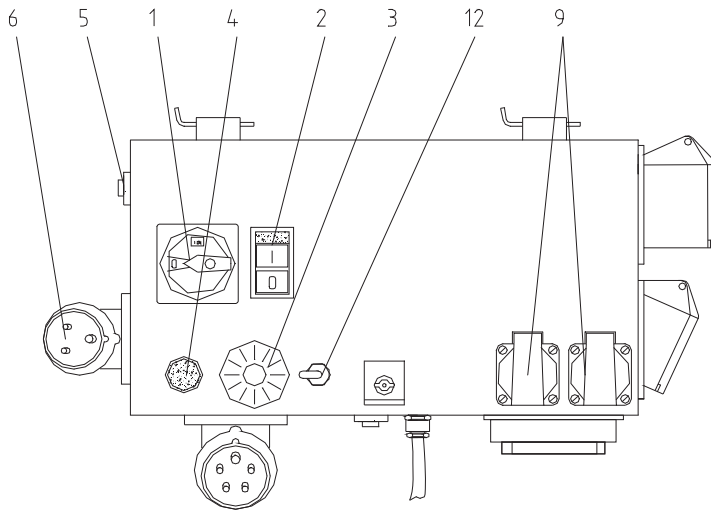
**Attention:** The frequency converter made by Berges neither can be repaired nor delivered any more

When installing the new Toshiba frequency converter the following parts must be ordered one time.

548330	Console compl. for Control	1x
608062	Filter fan - Sealed frame (from 01/2004)	2x
608063	Outlet filter (from 01/2004)	2x
530060	Foam rubber seal 15 x 5 (per meter)	1,5m
548325	Cover for FU housing P15	1x
561117	pan head screw M6x15 vz	10x
549497	Cable compl.	1x



Berges FU old version

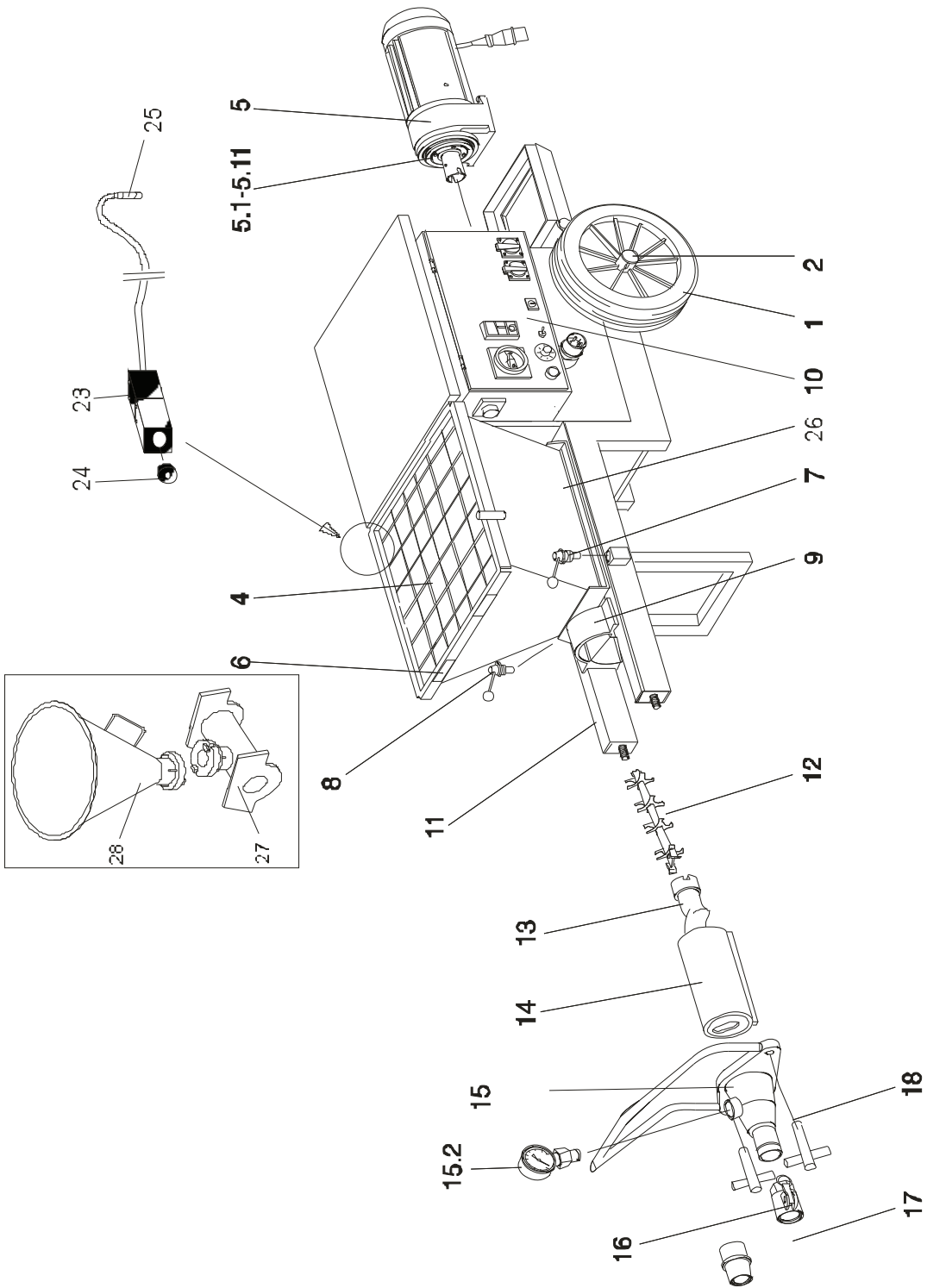




# Spare Parts

## Control Panel compl. (Supply Voltage 230V 1ph or 400V 3ph)

Item	Ordering No.	Description
<b>0</b>	<b>548924</b>	<b>Control panel compl.</b>
1	602117	Main switch
2	574039	Dual pushbutton compl. with signal lamp 230V
2	574033	<b>from 10/2006</b> Dual pushbutton compl. with signal lamp
2.1	574034	Dual pushbutton
2.2	574035	Rubber membrane
2.3	574043	Switching element 1 make contact
2.4	574037	Switching element 1 break contact
2.5	574038	Lamp socket
2.6	551169	Glow lamp 0.33W/230V
2.6	700532	Light bulb 24V 2W
*		Dual pushbutton spare parts from Telemecanique must be substituted only by a compl. Dual pushbutton 574039
3	565593	Coated potentiometer 10kW
3.1	573024	Turning button for the Potentiometer
3.2	390007	Foil (Scale)
4	549842	Red signal lamp compl. 230V with Glow lamp
4	549840	<b>from 10/2006</b> Signal lamp red compl. 24V
4.1	549841*	Pre-set red with mounting
4.2	574038*	Lamp socket
4.3	551169*	Glow lamp 0.33W/230V
4.3	700532	Light bulb 24V 2W
*		Siemens stopped signal lamp program so the compl. item 549842 has to be ordered
5	573011	Flange socket 4-pole (Remote control)
5.1	571653	Connector plug 4-pole with contact bridge
6	603303	CEE Attachment device plug 16A 3pole 6h
7	549138	CEE Attachment device plug 32A 5pole 6h
8	601736	CEE-Mounting socket 16A 4pole 6h (compressor)
9	570026	Shock-proof plug
9.1	603308	Protective cap for the mounting socket - shock-proof
10	548967	Installation socket 16A 5pole 6h, straight (Mixer)
11	549266	Attachment housing
11.1	549269	Plug insert 16-pole
12	572042	Lever switch with metal toggle
12.1	572107	Protective cap for the folding pin
13	548249	Protective conductor terminal 12-pole
14	549448	Circuit breaker 20A
14	549446	<b>from 10/2006</b> safety automatic B 20A 2P
15	570011	Circuit breaker B 16A
16	573013	Micro fuse mounting
16.1	573014	Micro fuse 0.5A indolent, packing unit 10 pieces
17	601635	Motor protection switch 6-10A
18	549474	Contacto 7,5kW 230V
		<b>When changing to General Electric contactor, item 19, also order item 19.1.</b>
19	559824	Contacto 7,5kW 230V
19.1	548954	Auxiliary contact
20	554360	Mains isolation relay 230V 6A, 2 Way contact, AC
20	601324	<b>from 10/06</b> Mains isolation relay 24-42V 6A, 2 Way contact, AC/DC
21	601325	PE terminal
22	602123	Two-way key
not shown	550639	from 10/06 Transformer prim 230V sec 24V 25VA 50/60Hz





# Spare Parts

## P15 4,0kW, 400V 3ph

Item	Ordering No.	Description
0	548980	<b>P15 400V 50Hz 3ph, with material trough</b>
0	548980/001	<b>P15 400V 50Hz 3ph, with extruder</b>
1	549152	Solid rubber wheel ø 260
2	580107	Folding pin ø 4.5mm galvanized
2.1	561249	Washer DIN125-B 21
4	548909	Protective screen (V2A)
5	548916	Drive unit 4kW compl. 230/400V, 50/60Hz
5.1	548931	Spur gear motor 4kW 140rpm
5.2	560133	Fan cover 4kW 260U
5.3	560008	Fan blade for the drive motor
5.4	548917	Flange for the drive
5.5	540035	Call grease nipple B M6x1 (45 degrees)
5.6	548946	Motor coupling 30mm (Steel)
5.7	561299	Grub screw M6x10
5.8	548920	Rubber seal D 100
5.9	548919	Pressure flange (steel)
5.10	548963	Seal 132/120 - 6 (from 10/02)
5.10	548941	O - Ring 120 x 6 (until 10/02)
6	605325	Counter hook for the hood support galvanized
7	548937	Left clamping grip compl.
7.1	548906	Headless screw GN220-M10
7.2	548914	Left door lock
8	548905	Right clamping grip compl.
8.1	548906	Headless screw GN220-M10
8.2	548915	Right door lock
9	548938	Anti-rotating equipment
10	548360	Electric Control system 400V 3ph compl.
		<b>Spare parts see next page</b>
11	548903	Brass slat
12	548913	Conveyor screw 50 pitch
13	548911	Rotor m-tec-star with borehole
14	548912	Stator m-tec star with anti-twist protection, blue
15	548921	Pump end piece compl. with M35 coupling including hose pressure manometer
15.1	548932	Pump end piece DN35 (Steel)
15.2	548922	Manometer 0-100bar in a stainless steel enclosure including protective guard
16	605067	Mortar automatic hose coupling F35-1 1/4" internal thread, ID 33mm
17	606286	Reduction piece M35/M25 rotating part
18	548939	Bronzed toggle nut M16
23	549947	Safety switch
24	549948	Magnet
25	573017	Coupling plug 4-pole PG13.5
26	548907	Material trough V2A
27	548940	V2A extruder with C-coupling
	549458	Filling hopper V2A for the Extruder





# Spare Parts

## Electric Control System P15 4,0kW 400V 3ph incl. FU, compl.

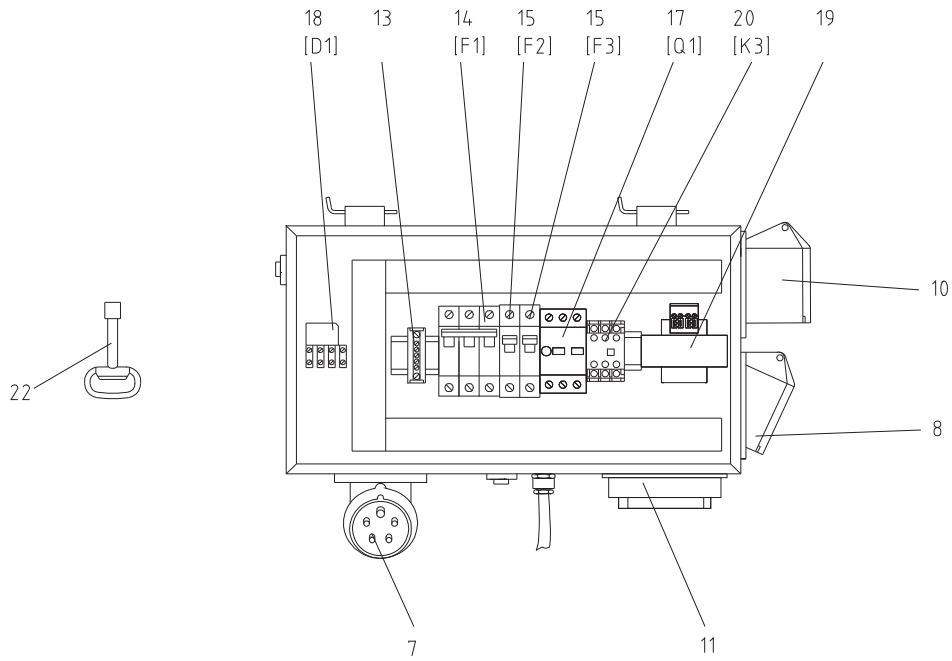
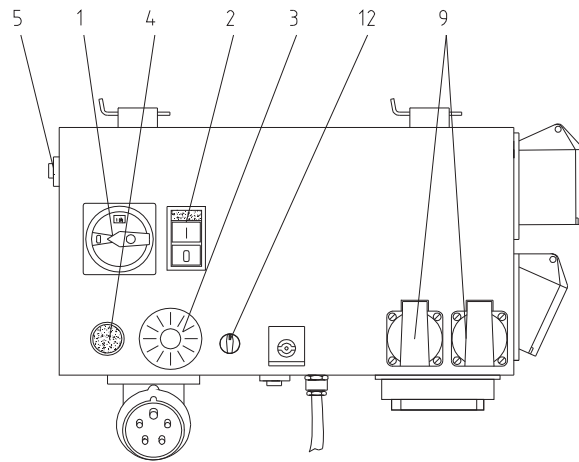
Item	Ordering No.	Description
0	548360	Electric Control System P15 4,0kW 400V 3ph incl. FU, compl.
1	548330	Panel compl. for control
2	548925	Cover
3	548325	Cover for frequency converter
4	548924/001	Control panel compl.
<b>Spare parts see next page</b>		
5	548160/001	from 10/06 Frequency converter 3.7kW Code 30.11 P15 (progr)
6	549497	Cable for frequency converter compl.
6.1	602253	PVC screw connection M20x1.5
6.2	549273	Nozzle housing
6.3	549268	Plug insert
8	608062	Filter fan - Sealed frame Type D200 (from 01/2004)
9	608063	Outlet filter Type GV200 (from 01/2004)
10	530060	Foam rubber seal 15 x 5 (per meter)



4 1 2 6  
6.1 / 6.2 / 6.3



3 10 5 8 / 9





# Spare Parts

## Control Panel 400V 3ph, compl.

Item	Ordering No.	Description
<b>0</b>	<b>548924/001</b>	<b>Control panel compl.</b>
1	602117	Main switch
2	574033	from 10/2006 Dual pushbutton compl. with signal lamp 24V
2.1	574034	Dual pushbutton
2.2	574035	Rubber membrane
2.3	574043	Switching element 1 make contact
2.4	574037	Switching element 1 break contact
2.5	574038	Lamp socket
2.6	700532	Light bulb 24V 2W
*		Dual pushbutton spare parts from Telemecanique must be substituted only by a compl. Dual pushbutton 574033
3	565593	Coated potentiometer 10kW
3.1	573024	Turning button for the Potentiometer
3.2	390007	Foil (Scale)
4	549840	from 10/2006 Signal lamp red compl. 24V
4.1	549841*	Pre-set red with mounting
4.2	574038*	Lamp socket
4.3	700532*	Light bulb 24V 2W
*		Siemens stopped signal lamp program so the compl. item 549840 has to be ordered
5	573011	Flange socket 4-pole
5.1	571653	Connector plug 4-pole with contact bridge
7	549138	CEE-Attachment device plug 32A 5pole 6h
8	601736	CEE-Mounting socket 16A 4pole 6h
9	570026	Shock-proof plug
9.1	603308	Protective cap for the mounting socket - shock-proof
10	548967	CEE-Installation socket 16A 5pole 6h , straight
11	549266	Attachment housing
11.1	549269	Plug insert 16-pole
12	572042	Lever switch with metal toggle
12.1	572107	Protective cap for the folding pin
13	548249	Protective conductor terminal 12-pole
14	554371	Circuit breaker L 16A 3 Block set F140
15	570011	Circuit breaker B 16A
17	601635	Motor protection switch 6-10A
18	546963	Bridge rectifier B80
19	561086	from 10/2006 Transformer prim 230V sec 24V 25VA 50/60Hz
20	607244	from 10/2006 auxiliary contactor 24V~ 50/60Hz 2 make contacts
21	601325	PE terminal
22	602123	Two-way key
not shown	573013	Micro fuse mounting
not shown	573014	Micro fuse 0.5A indolent, packing unit 10 pieces

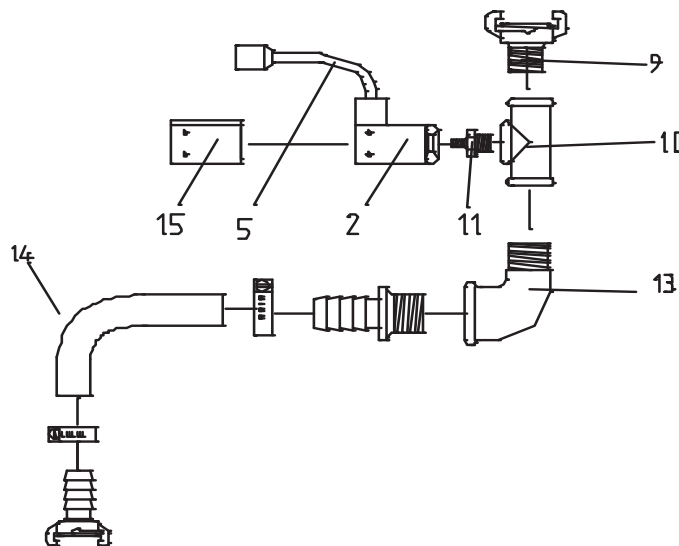


# Spare Parts

## Air Fitting compl.

Item	Ordering No.	Description
<b>0</b>	<b>548898</b>	<b>Air fitting compl. ( for P15 )</b>
2	607053 601037	Pressure monitor pre-set to 1.8bar Pressure monitor 0.5-8bar 1/4" without pre-settings
5	601058	Connecting cable with plug 4-pole compl.
5.1	530014	Cable 3G1 0.9m
5.2	573016	Coupling plug 4-pole straight
5.3	601057	Catch box 4-pole
9	561263	GEKA coupling 1/2" external thread
10	552032	T-Piece 1/2" internal thread
11	545113	Red. nipple 1/2" x 1/4" external thread, Brass
13	561222	Elbow - 90° - 1/2" inside thread / outside thread galvanized
14	608577	Air hose 1/2"x0.9m compl.
15	548899	Mounting for the air fitting

23281-311001





# Spare Parts

## Bag Mangle for Pasty Goods Materials

Item	Ordering No.	Description
<b>0</b>	<b>549040</b>	<b>Bag mangle for pasty goods materials compl.</b>
1	549041	Lower part for the bag mangle
2	549042	Bag mangle compl. without mounting frame
2.1	549039	Roller for the bag mangle
3	549038	Bolts for the bag mangle
4	549047	Roller for the bag mangle
5	549059	Crank handle compl.
6	549044	Strut for the bag mangle
7	549043	Pressure piece for the roller
8	552836	Clamping catch

22470-311001

